



# White Pearl

## Development Moored platform in ice



Based on SEVAN 's FPSO solution for open water screening of hull modifications for ice operations was done, and subsequent modified hull selection.

Conceptual design of a floating production unit in ice included ice engineering was done. The study included evaluation of first year sea ice and ice bergs conditions on site, global load estimates, quasi static load estimates, dynamic simulations and mooring loads. Study of ice berg impact was included and probability of failure from ice berg impact was studied by a dynamic model. Further ice engineering related to design and operations, included surface ice transport and ice impact, ice management and operational aspects, risk management. The study was followed up with ice model testing in the large ice model basin at HSVA.

### PROJECT

White pearl - development moored platform in ice

### PROJECT TYPE

Screening and Conceptual design of a FPSO platform solution for ice

### CLIENT

SEVAN , Arendal , Norway and Statoil-Hydro

### PARTNERS

NTNU, SPTU, HSVA

### TIME PERIOD

2008

## SCOPE OF WORK

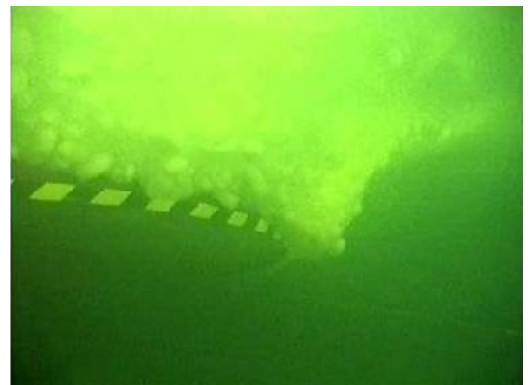
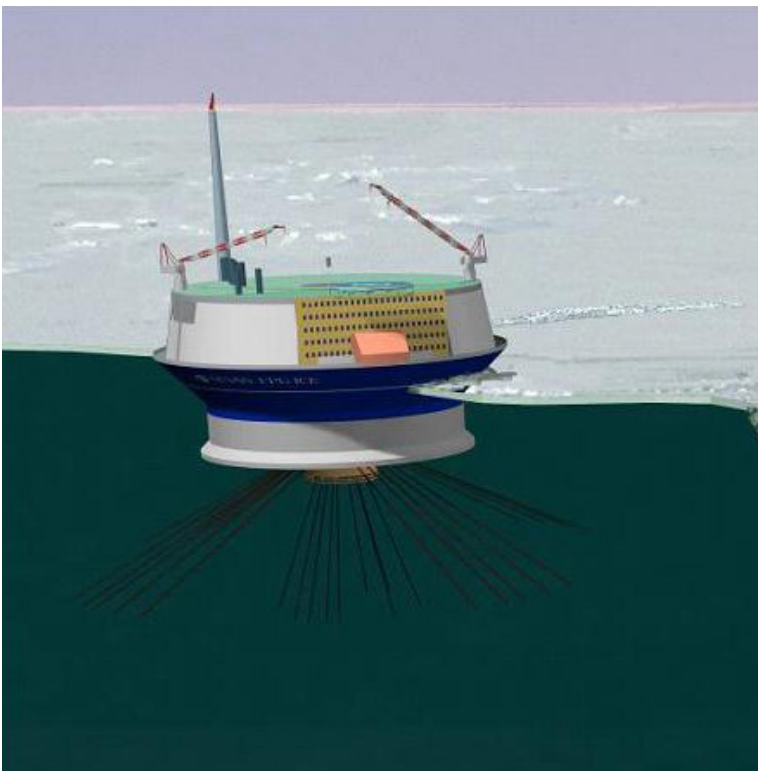
- Lead of the ice study
- Lead of ice model testing reporting of screening
- Conceptual studies
- Ice model testing

## OUR SERVICES

- text

## DISCIPLINES

- text



03\_000\_00.00.2016